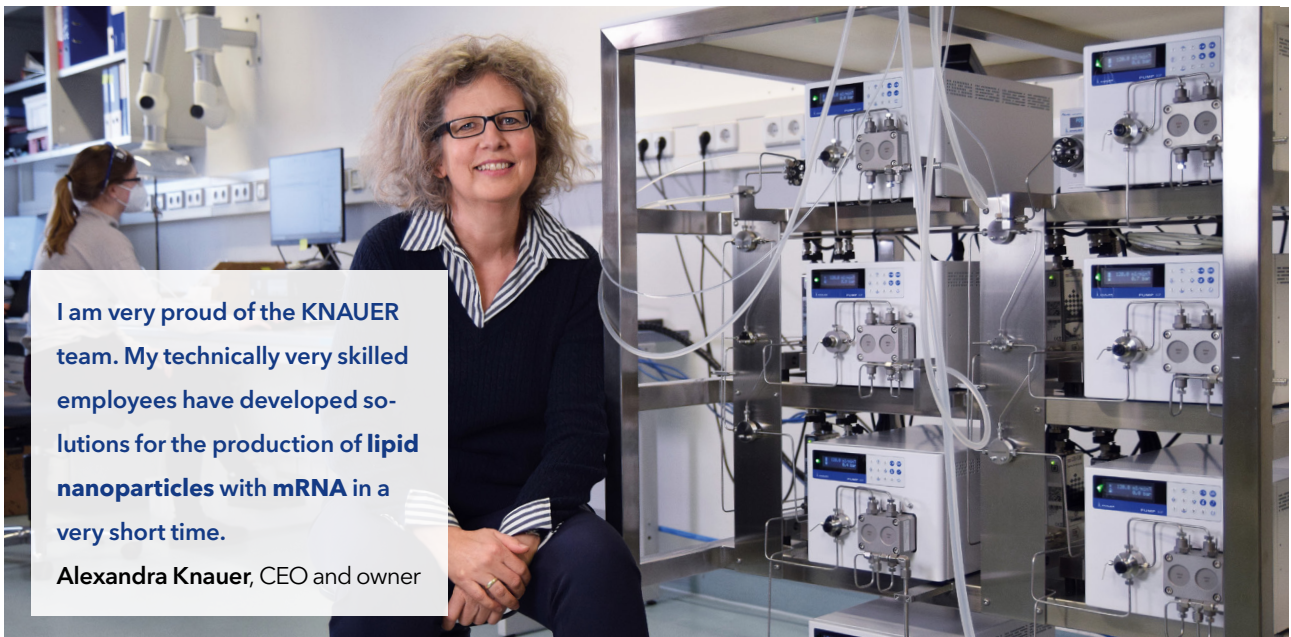


Science Together



think **LNP.** | think **KNAUER.**

Impingement Jets Mixing Skids for high flow production of nanoparticles (LNP, microemulsions, etc.)



I am very proud of the KNAUER team. My technically very skilled employees have developed solutions for the production of **lipid nanoparticles with mRNA** in a very short time.

Alexandra Knauer, CEO and owner



[www.knauer.net/LNP](http://www.knauer.net/LNP)

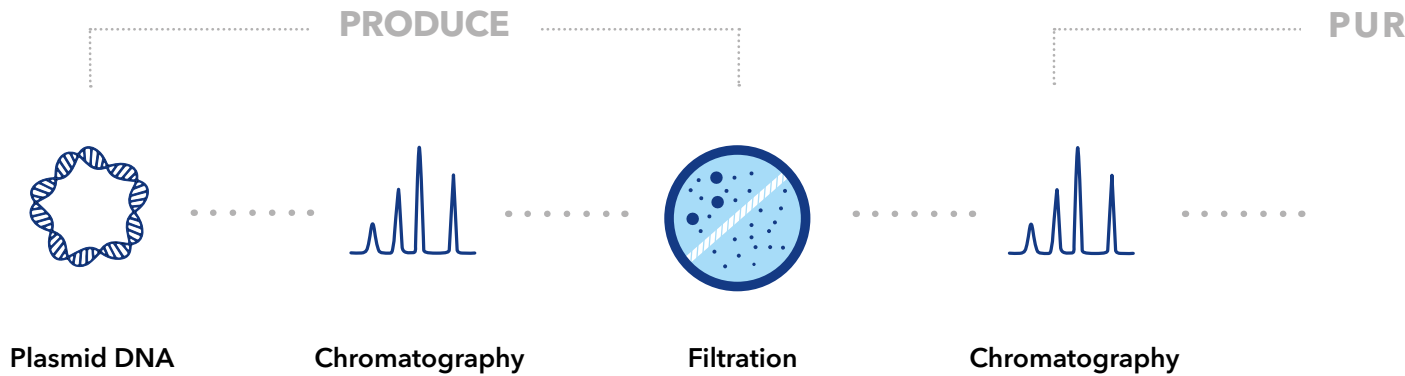
This print product is awarded with the Blue Angel.

[www.blauer-engel.de/uz195](http://www.blauer-engel.de/uz195)

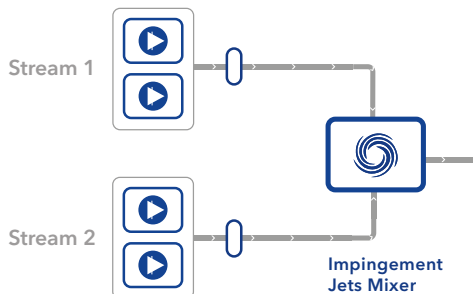


UF6

# PROCESS OVERVIEW



IJM Skid for lipid nanoparticle production



Flow scheme for example for mixing of lipids and API

## SKIDS - FROM R&D TO MANUFACTURING

The number of parallel units depends on the application. Also, the number of pumps, flow meters, jet mixer and pipes can be adapted to the required conditions and scale. All skids are built in a stainless steel frame on casters and are suitable for CIP cleaning procedures in pharmaceutical production. The Small Production Scale Unit IJM Skid contains two parallel mixing units. Each unit contains four pumps. Concentrated Active Pharmaceutical Ingredient (API) solution is diluted first and then mixed with the organic phase. Finally, the mixture is quenched in a third mixer. Both units can be operated independently. The Large Production Scale Unit contains eight parallel mixing units. Each unit consists of two pumps to deliver lipid and API streams, two flow meters for flow control and one jet mixer. Pre-dilution of the API and quenching is performed for the combined flow of all eight units. These steps are not included in KNAUER's system.

### LOOKING FOR LIQUID CHROMATOGRAPHY?



As experts in liquid chromatography KNAUER offers a large variety of systems, solutions and applications for **analytical HPLC**, **preparative HPLC** and **FPLC**.

Find out more:

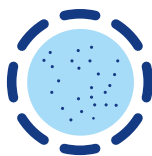
[www.knauer.net](http://www.knauer.net)

IFY

## FORMULATE AND FILL



Sterile filtration



Formulation with  
Impingement Jets  
Mixing Technology



Drug product  
(e.g. lipid nanoparticles  
carrying API)

## THE TECHNOLOGY

**Impingement jets mixing technology (IJM)** enables the formulation and production of high-quality lipid nanoparticles carrying API (e.g. for **mRNA vaccines**). The encapsulation process of active pharmaceutical agents with lipids is based on impingement jets mixing technology, where two streams collide at high velocity in a jet mixing chamber. One of the streams contains the lipids in organic solvents and the other stream the API in water.

The mixing at high velocity reduces the solubility of the lipids so that homogenous nanoparticles are formed. The quality of nanoparticles depends on the streams' flow stability, the mixer geometry and the fluid velocities. As a final step, the mixture is quenched to stop particle growth.

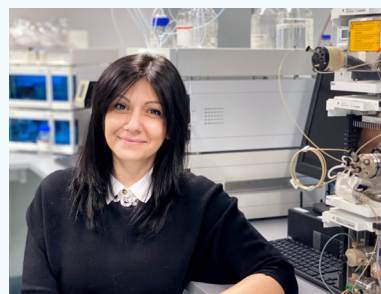
### System for LNP formulation consisting of:

- KNAUER high-pressure dosing pumps 80P
- Coriolis flow meters
- KNAUER IJM mixers
- Inlet manifolds for lipid/ethanol mixture and mRNA/buffer mixture
- Outlet manifold for LNP solution
- Back-seal washing system
- Frame (stainless steel system 1.4301)
- Installation & familiarization by KNAUER
- Technical documentation, customized, order- and article-related
- Service
- Capillary customization and labeling
- FAT (Factory Acceptance Test at KNAUER Berlin)
- SAT (Site Acceptance Test at customer site)





### WHAT THE EXPERT SAYS

'I am delighted that we have been able to successfully deliver all our systems for vaccine production on time. It makes our team proud that we are helping to combat COVID-19 in this way.'

**Lilit Avagyan**, Business Development Manager



# IMPINGEMENT JETS MIXING SKIDS BY KNAUER

	Pilot Scale Unit	Small Production Scale Unit	Middle Production Scale Unit	Large Production Scale Unit
				
<b>Number of impingement jets mixers</b>	1	2	3	8
<b>Number of pumps</b>	4	8	12	16
<b>Number of flow meter</b>	4	8	12	16
<b>Number of valves</b>	1	2	3	-
<b>Process connection inlet*</b>	1/2" Tri-clamp (4 Inlets)	3/8" and 1/4" barbed fitting (6 Inlets)	3/8" and 1/4" barbed fitting (9 Inlets)	1/2" Tri-clamp (2 Inlets)
<b>Process connection outlet*</b>	1/2" Tri-clamp (1 Outlet)	1/4" barbed fitting (2 Outlets)	1/4" barbed fitting (3 Outlets)	1/2" Tri-clamp (1 Outlet)
<b>Volumetric flow rate</b>	up to 1 l/min	up to 2 l/min	up to 3 l/min	up to 4 l/min**
<b>Volumetric flow rate</b>	up to 60 l/h	up to 120 l/h	up to 180 l/h	up to 240 l/h**
<b>Maximum operating pressure***</b>	70 bar	100 bar	70 bar	70 bar
<b>Liquid temperature range</b>	4–60°C (39.2–140°F)	4–60°C (39.2–140°F)	4–60°C (39.2–140°F)	4–60°C (39.2–140°F)
<b>Wetted materials</b>	stainless steel, PEEK, titanium, FFKM, PTFE (GFP 55), aluminum oxide, ruby, sapphire, EPDM	stainless steel, PEEK, titanium, FFKM, PTFE (GFP 55), aluminum oxide, ruby, sapphire	stainless steel, PEEK, titanium, FFKM, PTFE (GFP 55), aluminum oxide, ruby, sapphire	stainless steel, PEEK, titanium, FFKM, PTFE (GFP 55), aluminum oxide, ruby, sapphire, EPDM
<b>Software</b>	CDS, 21 CFR part 11 compliant	CDS, 21 CFR part 11 compliant	not included, necessary interfaces for the integration into PLC (Siemens or Rockwell) available	not included, necessary interfaces for the integration into PLC (Siemens or Rockwell) available
<b>Interfaces</b>	pump: LAN, RS-232, pin header connectors; flow meter: RS-232 + FLOW-BUS™; valve drive: LAN	pump: LAN, RS-232, pin header connectors; flow meter: RS-232 + FLOW-BUS™; valve drive: LAN	pump: LAN, RS-232, pin header connectors; flow meter: RS-232 + FLOW-BUS™; valve drive: LAN	pump: LAN, RS-232, pin header connectors; flow meter: RS-232 + PROFINET; valve drive: LAN
<b>Power supply</b>	pump: 100–240 V, 50–60 Hz; flow meter: +15...24 V DC, valve drive: 24 V DC	pump: 100–240 V, 50–60 Hz; flow meter: +15...24 V DC, valve drive: 24 V DC	pump: 100–240 V, 50–60 Hz; flow meter: +15...24 V DC, valve drive: 24 V DC	pump: 100–240 V, 50–60 Hz; flow meter: +15...24 V DC, valve drive: 24 V DC
<b>Power consumption (per device)</b>	pump: maximum 320 W; flow meter: 3 W; valve drive: 65 W	pump: maximum 320 W; flow meter: 3 W; valve drive: 65 W	pump: maximum 320 W; flow meter: 3 W; valve drive: 65 W	pump: maximum 320 W; flow meter: 3 W
<b>Ambient conditions</b>	Temperature range: 4–40 °C; 39.2–104 °F; below 90 % humidity (non condensing)	Temperature range: 4–40 °C; 39.2–104 °F; below 90 % humidity (non condensing)	Temperature range: 4–40 °C; 39.2–104 °F; below 90 % humidity (non condensing)	Temperature range: 4–40 °C; 39.2–104 °F; below 90 % humidity (non condensing)
<b>Dimensions (W x H x D)</b>	900 x 915 x 700 mm	1000 x 1290 x 700 mm	1500 x 1290 x 800 mm	1800 x 1820 x 800 mm
<b>Net weight (approx.)</b>	150 kg	250 kg	400 kg	500 kg
<b>API-predilution and quenching</b>	Yes	Yes	Yes	extra pump units needed
<b>GMP-ready documentation</b>	Yes	Yes	Yes	Yes
<b>Factory acceptance test</b>	Yes	Yes	Yes	Yes
<b>Site acceptance test</b>	Yes	Yes	Yes	Yes
<b>Purchase order lead time</b>	about 2–3 months	about 2–3 months	about 3–5 months, depending on customer requirements	about 3–5 months, depending on customer requirements

\*different connections on request. \*\*undiluted API, 336 L/h assumed flow rate after quenching compared to other mixing units. \*\*\*depends on specific pump configuration and application

**KNAUER**

Wissenschaftliche Geräte GmbH  
Hegauer Weg 38  
14163 Berlin, Germany



+49 30 809727-0  
+49 30 8015010 (Fax)  
info@knauer.net  
www.knauer.net



Depending on the process the end user must consider the legal situation of patents and intellectual property. KNAUER is designing the customized hardware solution on customer's request, process and chemistry are not included. Technical information are subject to change.