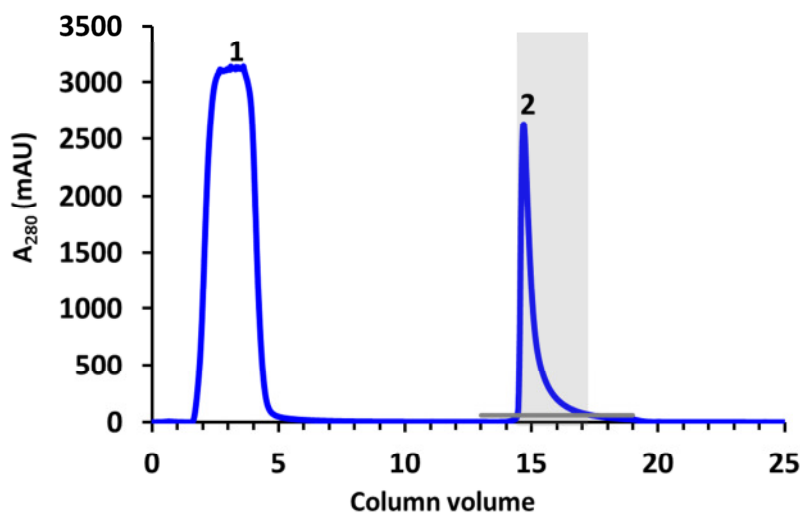




Purification of human IgG with AZURA BIO LC Compact 50

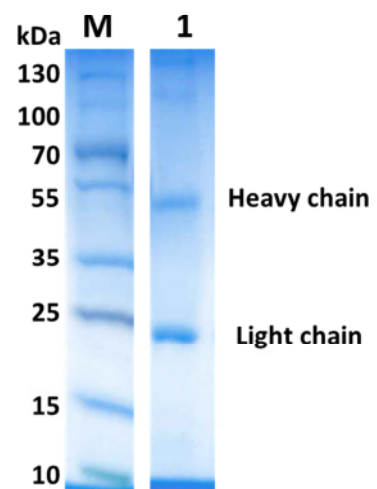
Method	VBS0059J	
FPLC	Affinity chromatography	
Column:	HiTrap Protein G HP 5ml	
Phase:	Protein G Sepharose High Performance	
Conditions:	Buffers:	Equilibration/wash buffer: 20 mM phosphate buffer pH, 7.0 Elution buffer: 100 mM Glycin, pH 2.7
	Method:	Equilibration 1 CV Sample Load 2 CV Wash step 10 CV Elution 5 CV Re-equilibration 7 CV <small>CV: column volume</small>
	Flowrate:	5 ml/min
	Temperature:	ambient
	Sample volume:	20 ml using pump
	Fractionation:	Threshold fractionation level based (start/end: 60 mAU)
Detection:	UV 280 nm	
Samples:	Human serum diluted in equilibration buffer (1:4)	
Keywords:	AZURA BIO LC Compact 50, FPLC, affinity chromatography, antibody, protein purification, human plasma	

Chromatogram:



1. Loading peak/ flow through
2. Elution peak/Human IgG

 Eluted fraction
 Fractionation threshold



- M. Molecular weight marker
 1. Elution fraction/purified human IgG